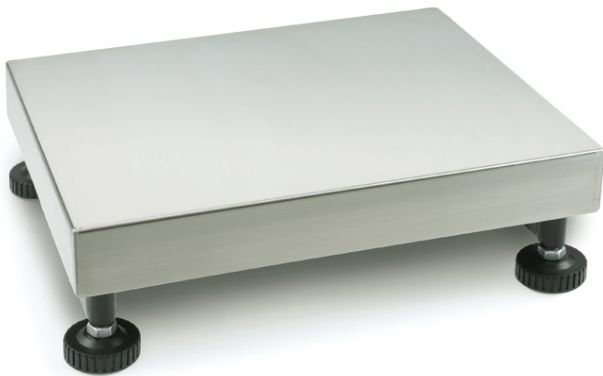


# KERN KFP 150V20LM

Platform: weighing plate of stainless steel, painted steel base, silicone-coated aluminium load cell with protection against dust and water splashes IP65



## Category

Brand	KERN
Product category	Component
Product group	Platform
Product family	KFP-V20-IP65

## Measuring System

Weighing capacity [Max]	60 kg; 150 kg
Readability [d]	5 g
Minimum weight [Min]	400 g; 1 kg
Loadcell type	aluminium IP65 silicone-coated
Load cell connection	6-wire
Load cell OIML class	C3

## Approval

Verification scale interval [e]	20 g; 50 g
Conformity assessment possible ex works	✓

## Construction

Dimensions weighing platform (W×D×H)	650×500×139 mm
Material weighing plate	stainless steel
Material platform	steel, powder-coated
Dimensions weighing surface (W×D)	650×500 mm
Cable length	2,5 m
Allowed cable length display device [Max]	3 m
Material load cell(s)	aluminium
Load cells - number	1
Levelling feet adjustable	✓

## Functions

IP protection - load cell	IP65
---------------------------	------

## Packing & Shipping

Readability force [d] (N)	1 d
Dimensions packaging (W×D×H)	670×1040×240 mm
Net weight	18,8 kg
Shipping method	Parcel service
Net weight approx.	19 kg
Gross weight approx.	24 kg
Shipping weight	33,4 kg

## Services (optional)

Article number for conformity assessment	965-229
Article number for DAkkS calibration	963-129

## Pictograms

### STANDARD



### FACTORY

